



HONDA CBR600RR 2007-12



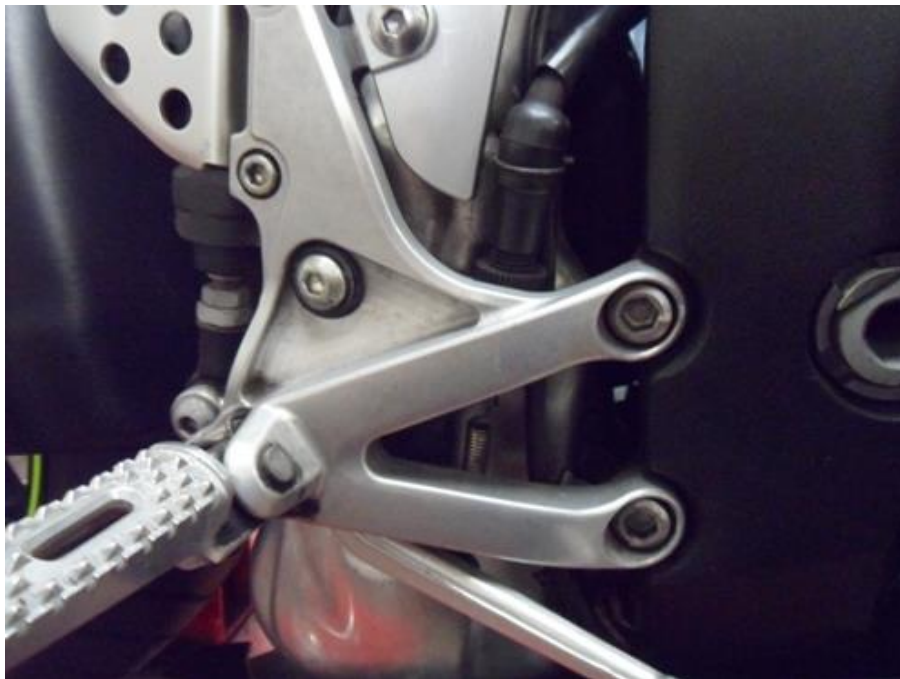
- **PACKING LIST:**
- **1X LINK PIPE**
- **2X CLAMPS**
- **1X SILENCER**
- **1X MOUNTING BRACKET WITH RUBBER INSERT**
- **2X SPACERS**
- **2X M6x 40MM CAP SCREWS**
- **2X M6 WASHERS**
- **1X TUBE OF SILICON SEALANT**

- **Fitting Instructions**

- We advise that this product is fitted by an experienced motorcycle mechanic.
- Please check packing list before you start.
- Secure motorcycle on level ground using a paddock stand. Recommended!
- Remove seats and seat cowl.
- Disconnect wire harness and remove turn signal/tail light unit.



- Loosen footrest bracket to give clearance.



- Remove pillion footrest bracket.



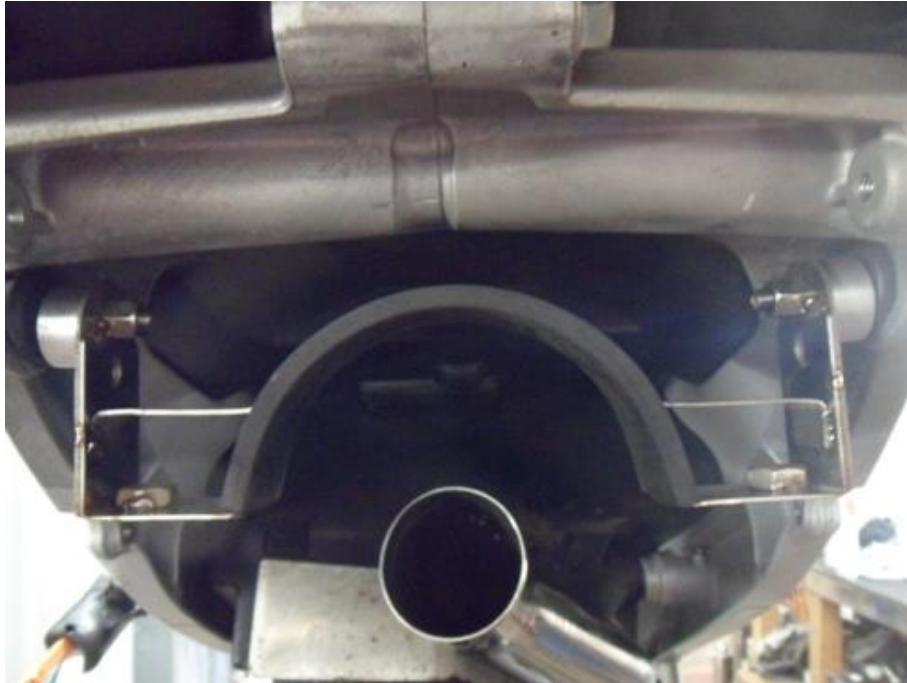
- Remove standard silencer and keep safe.
- Remove aluminium under tray and keep safe.



- Clean the collector pipe of old gasket material, dirt and carbon deposits.
- Fit the clamp and insert the link pipe on to the collector.



- **Fit the silencer bracket to the frame with the spacers.**



- **Fit the silencer with clamp on to the link pipe and fit the strap around the silencer and to the bracket.**



- Starting from the front, working rearwards tighten all clamps and fasteners.
- Start the engine and check for leaks.
- Refit footrests, bodywork and seats.



- After your first ride out, check all fasteners for tightness.