



1. **VFR 800 DOWN PIPES**



PLEASE CHECK PACKING LIST BEFORE YOU START:

1X DOWN PIPE SET PR2237

2X CLAMPS 36X39MM PR2061

1X COLLECTOR CLAMP 48X51MM PR2064

1X COLLECTOR GASKET 48.5X54.5X28MM PR1881

4X COPPER GASKETS 40MM PR1415

1X SILENCER CLAMP 56X59MM PR2066

1X RUBBER STAND STOP PR2235

4X SPRINGS

1X LAMBDA SENSOR EXTENSION CABLE

2X ZIP TIES

1X L SHAPED BRACKET

Fitting Instructions

We strongly advise that this product is fitted by a qualified motorcycle mechanic.

Always fit new gaskets!

Secure motorcycle on level ground using paddock stand. Recommended!

Remove seat, panels and standard exhausts as necessary.

Remove old gaskets and clean the ports of dirt, corrosion and carbon deposits.

Fit new gaskets into exhaust ports, using a small amount of silicone to hold in place.

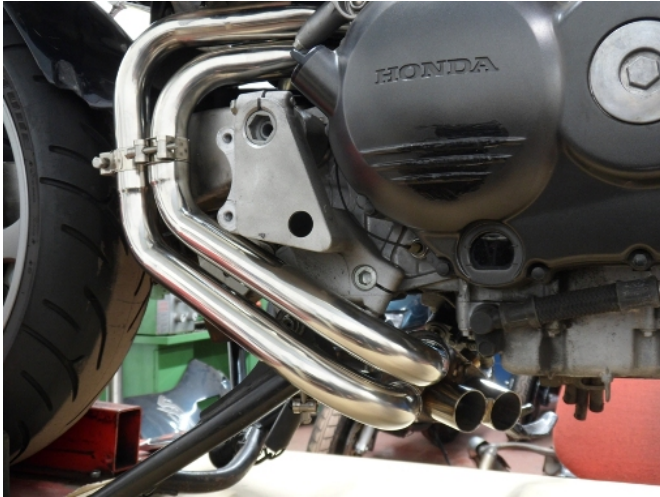
2. Fit rear pipes finger tight.



Insert middle pipes into collector.



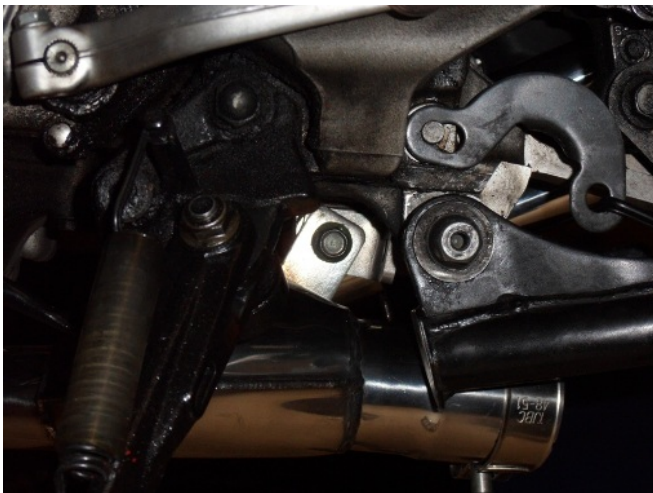
Fit assembly onto rear pipes.



3. *Fit cable bracket in between exhaust and frame, important that you do this correctly.*



And insert mounting bolt finger tight.



Fit front pipes.



4. Fit collector link pipe, aligning stand stop and fit standard silencer.



Starting from the front, fully tighten all clamps and fasteners.

Plug in the lambda sensor extension cable.



Refit seat, panels etc.