



SV650 1998-02 HI-LEVEL



PR2499 FITMENT

1.

PACKING LIST:

1X LINKPIPE

2X CLAMPS

1X SILENCER AND STRAP

1X MOUNTING BRACKET

1X M8 x 20MM CAP SCREW

1X M6 x 20MM CAP SCREW

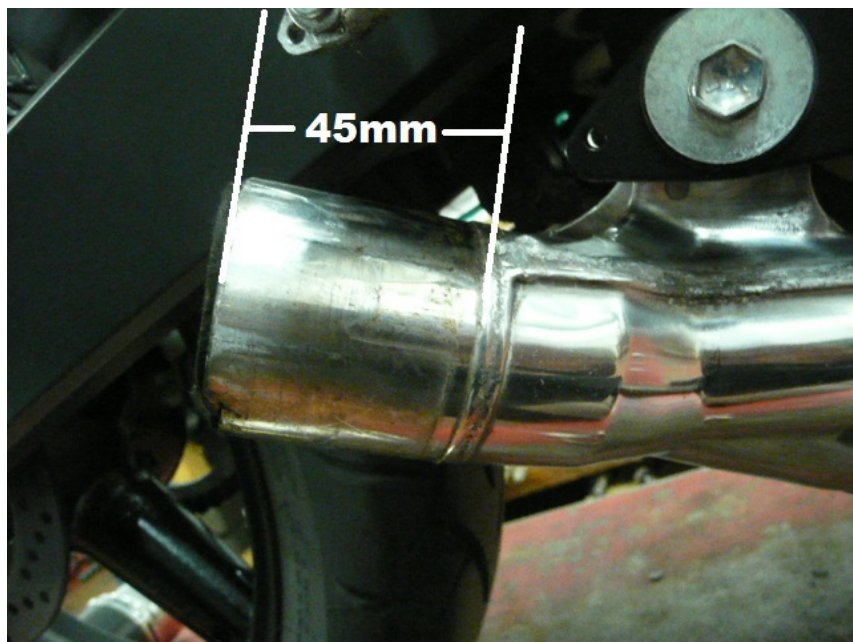
2X M8 WASHERS

1X M6 WASHER

1X NYLOC NUT

2.

- **We advise that this product is fitted by an experienced motorcycle mechanic.**
- **Please check packing list before you start.**
- **Secure motorcycle on level ground using a paddock stand. Recommended!**
- **Remove standard exhaust by cutting the pipe 45mm from the weld bead.**



- **De-burr the collector pipe**

3.

- **Fit clamp on the pipe and insert on to the collector.**

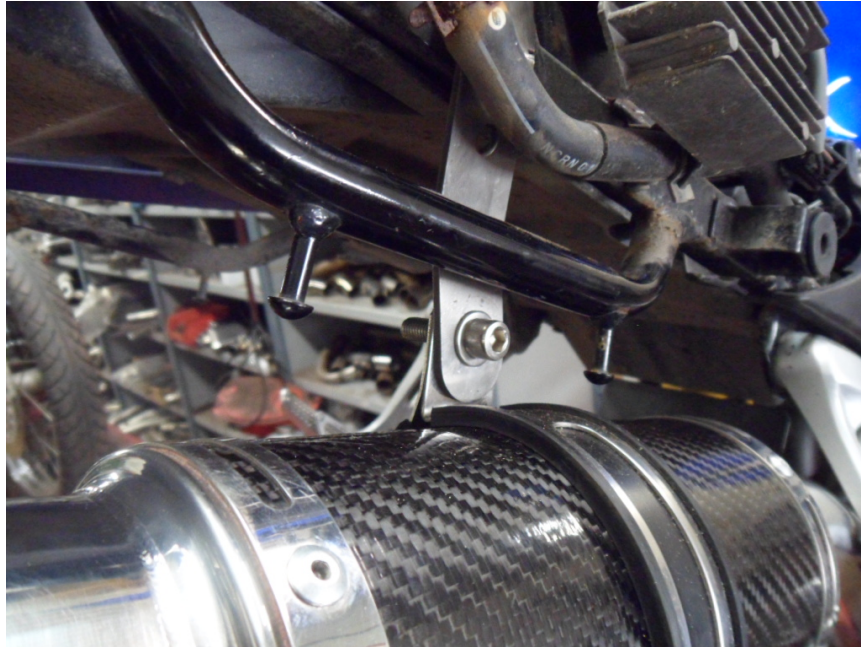


- **Fit the mounting bracket behind the brake fluid reservoir.**



4.

- **Fit the silencer with clamp on to the link pipe and fit the strap around the silencer and to the bracket.**



- **Starting from the front, working rearwards tighten all clamps and fasteners.**
- **Start the engine and check for leaks.**
- **After your first ride out, check all fasteners for tightness, especially the baffle bolt.**