



2-1 COMPLETE SYSTEM GPZ500/EX500 87-07



Packing List:

- 1X PR2465 GPZ500/EX500 87- 07 2 into 1 DOWNPIPES.
- 2 x BELLY PAN BRACKETS
- 1X PR2464 GPZ500/EX500 87-07 LINK PIPE.
- 1 x STAND STOP RUBBER PR2235.
- 1X SILENCER OF CHOICE AND STRAP
- 1X CLAMPS 52mm/55mm PR2065
- 1x CLAMP 44/47 PR2063.
- 2 x COPPER GASKETS 46mm PR1419

Fitting Instructions.

We strongly advise that this product is fitted by a qualified motorcycle mechanic.

Please check packing list before you start.

Always fit new gaskets

Secure motorcycle on level ground using paddock stand.

Recommended!

Remove seat(s), panels and standard exhausts as necessary.

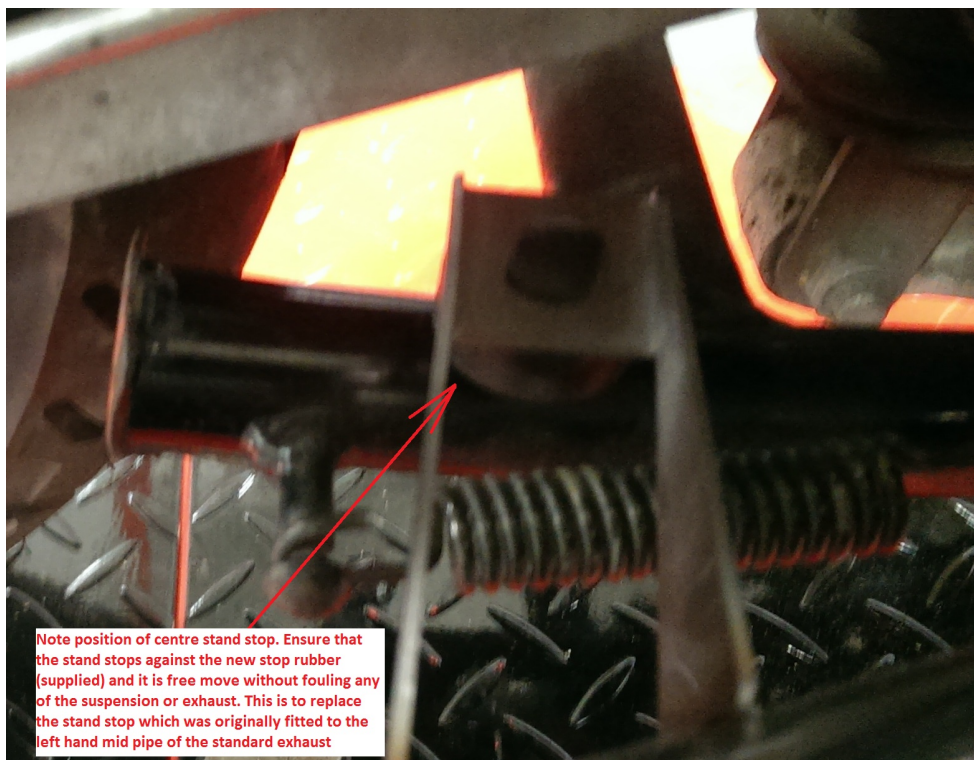
1. *Clean cylinder head exhaust port of old gasket material, dirt and carbon deposits. Insert new copper gaskets as supplied (46mm, PR1419).*
2. *Loosely fit new downpipes onto cylinder head using the OEM/Original clamps/collets. Do NOT fully tighten at this stage.*
3. *Loosely fit the new link pipe/mid pipe to the downpipes, ensuring the*

clamp 44/47mm is also loosely attached to the pipe and that the stand stop rubber is also in place.

4. Do NOT tighten ANY of the fittings at this stage.
5. Fit silencer with 52/55mm clamp on to link pipe, support with the aid of a jack (insulated so as not to scratch the silencer or mid pipe) or seek the assistance of another person.
6. Fit the rubber strap to the silencer strap and slide onto the silencer to align with the r/h rear silencer mounting. Fit original mounting bolt but do NOT tighten at this stage.
7. Rotate link pipe to obtain alignment and clearance. **PLEASE PAY SPECIAL ATTENTION TO THE TWO INDENTATIONS IN THE MID PIPE.** These are positioned to allow additional clearance between the sump and also the rear brake pedal.



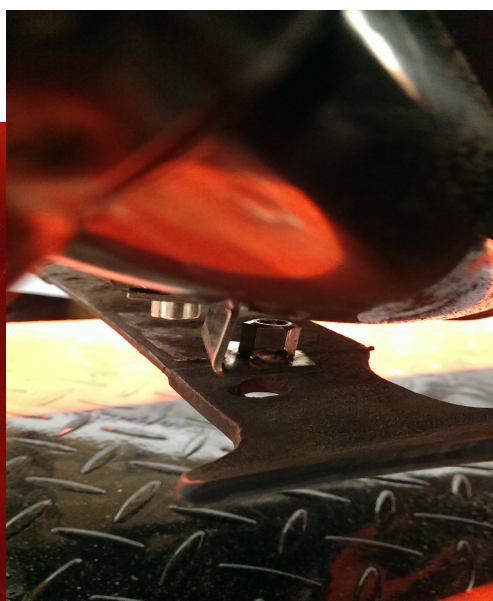
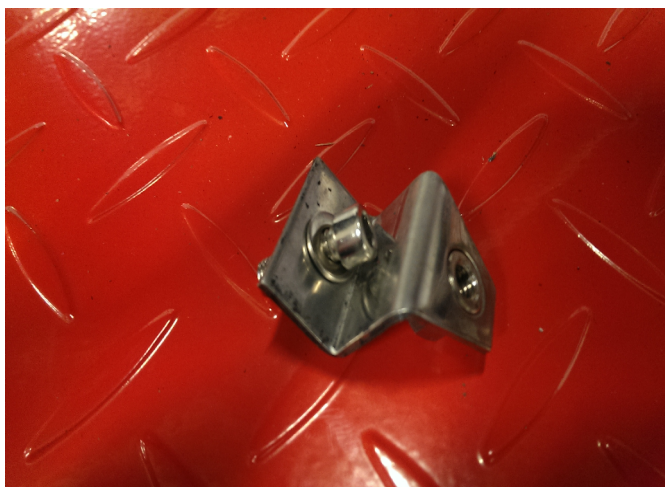
Once satisfied that the stand stop is in the correct position (see image below) and that there is clearance all around the exhaust, begin to tighten all clamps and fasteners starting from the front and working rearwards.



Start engine and check for leaks. Rectify any leaks. Check all connections for tightness.

BEWARE THE EXHAUST MAY BE HOT!!!

Using the 2 new belly pan brackets supplied (see image below) attach to the original mounting point using the pins provided. Replace panels, seats etc.



After your first ride out, check all fasteners for tightness.