



## **SV650 2003-15 HI-LEVEL**



### **PR2658 FITMENT**

#### **PACKING LIST:**

**1X LINKPIPE**

**2X CLAMPS**

**1X SILENCER AND STRAP WITH**

**RUBBER INSERT**

**1X MOUNTING BRACKET**

**2X SPACERS**

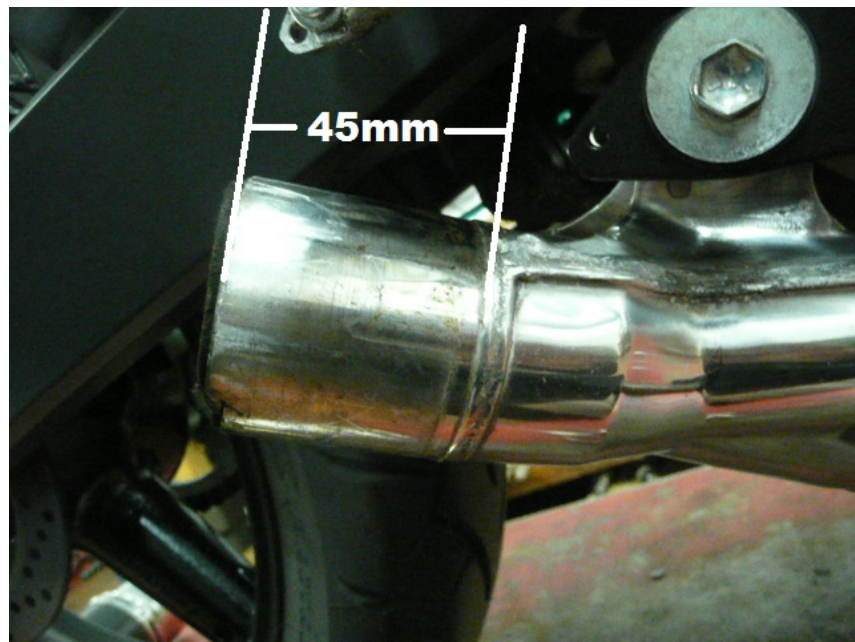
**3X M8 CAP SCREWS**

**4X M8 WASHERS**

**1X NYLOC NUT**

**We advise that this product is fitted by an experienced motorcycle mechanic.**

- **Please check packing list before you start.**
- **Secure motorcycle on level ground using a paddock stand. Recommended!**
- **Remove standard exhaust by cutting the pipe 45mm from the weld bead.**



- **De-burr the outer edge of collector pipe**

- **Fit the mounting bracket with spacers behind the footrest bracket.**



- **Fit clamp on the pipe and insert on to the collector.**



- **Fit the silencer with clamp on to the link pipe and fit the strap around the silencer and to the bracket.**



- **Starting from the front, working rearwards tighten all clamps and fasteners.**
- **Start the engine and check for leaks.**
- **After your first ride out, check all fasteners for tightness, especially the baffle bolt.**