

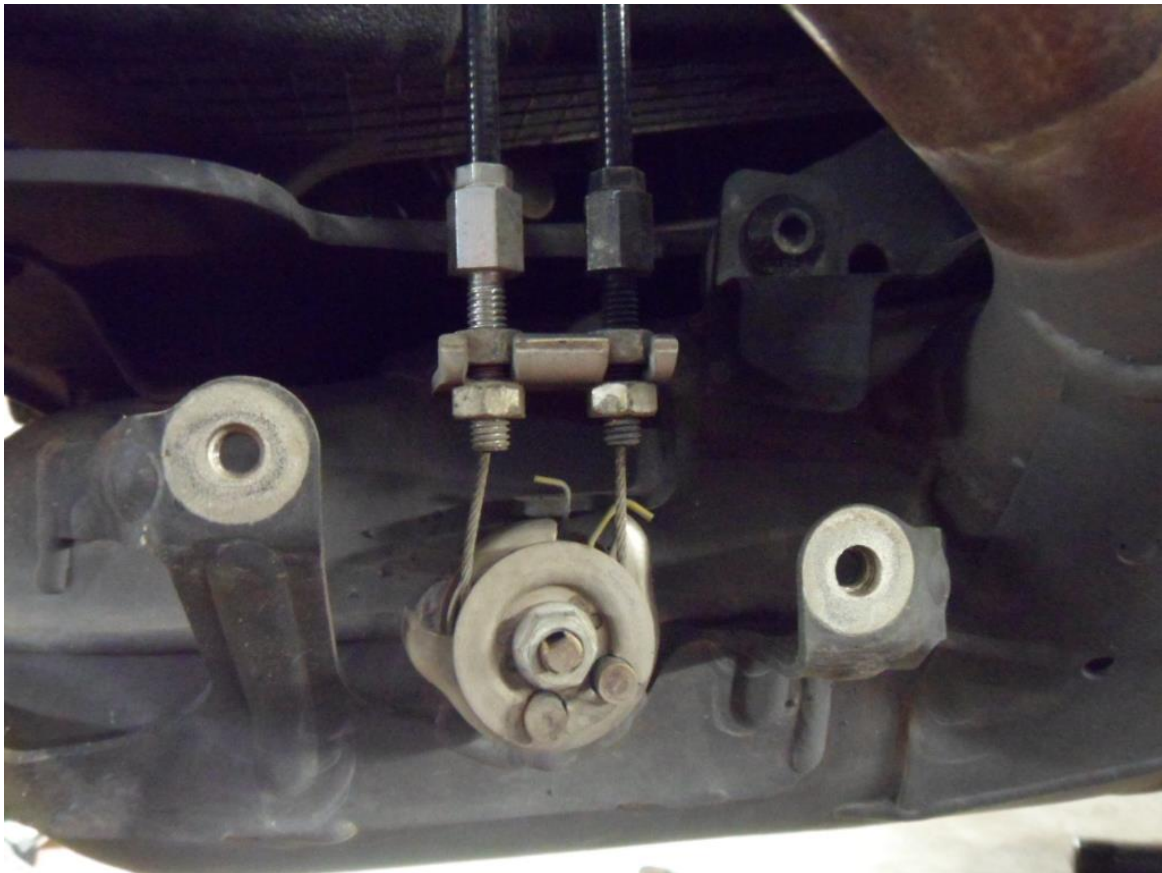


YAMAHA V-MAX 1700

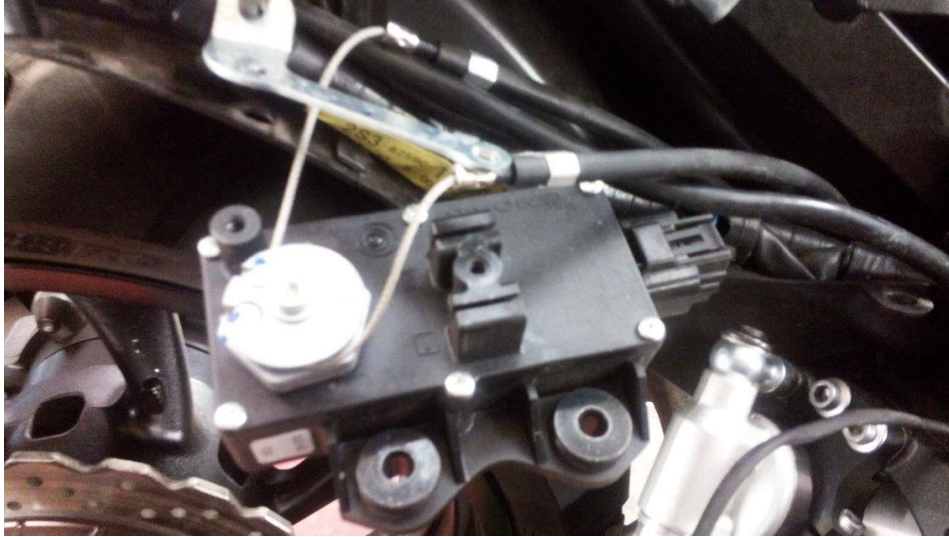


- **PACKING LIST:**
- **2X LINKPIPES**
- **6X CLAMPS**
- **2X SILENCERS AND STRAPS WITH RUBBER INSERTS**
- **2X MOUNTING BRACKETS**
- **2X M8x 20MM CAP SCREWS**
- **2X M8 NYLOC NUTS**
- **4X M8 WASHERS**
- **1X TUBE OF SILICON SEALANT**

- **Fitting Instructions**
- We advise that this product is fitted by an experienced motorcycle mechanic.
- Please check packing list before you start.
- Secure motorcycle on level ground using a paddock stand. Recommended!
- Remove standard silencers.
- Remove the cables from the collector box.



- Remove the seats, side panels and seat cowl.
- Remove the valve cables from the servo.



- Loosen the front downpipe collars.



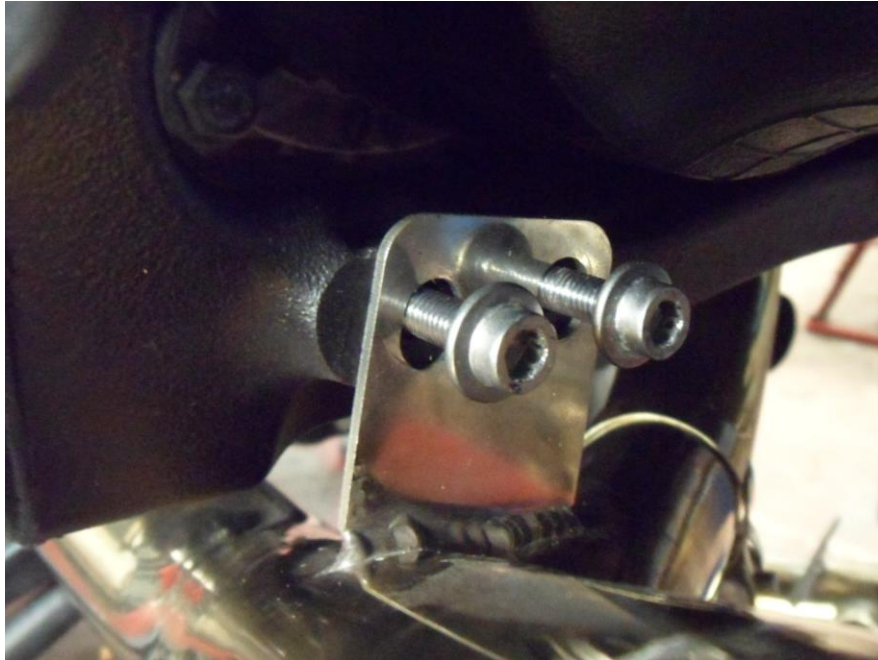
- Loosen the cross over clamp.



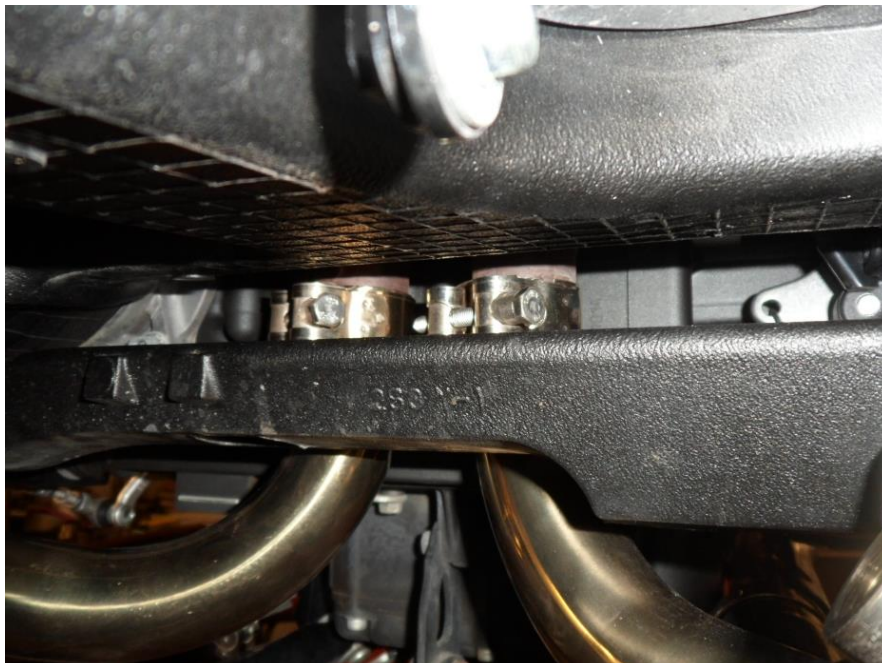
- Remove the main exhaust collector/silencer unit.
 - Clean the outlet pipes of old gasket material, dirt and carbon deposits.
- **ASSEMBLY.**
- Fit the clamp and insert the pipe on to the rear collector and front downpipe.



- **Hold in place with the bolts.**



- **Repeat on the other side.**
- **Check the alignment of the two rear pipes and tighten.**



- Fully tighten the front downpipes.
- Attach the brackets to the frame.



- Fit the silencer with clamp on to the link pipe and fit the strap around the silencer and to the bracket.



- **Fully tighten all clamps and fasteners.**
- **Start the engine and check for leaks.**
- **After your first ride out, check all fasteners for tightness, especially the baffle bolts.**